



Specification

BX - CSR - II speed radar sensor

VRE: V1.0 release time: 2021.03.19

Catalogue

Products Profile.....	1
Products of Functions profile.....	1
Boundary dimension.....	1
Units: mm.....	1
Installation procedure.....	1
Connection definition.....	1
Technical specifications.....	2
Short list of common sensor technical parameters.....	3
Technical Parameters of Common Sensors (Continued).....	4

Products Profile

BX - CSR - II speed radar sensor is a high-performance traffic speed measuring radar, using radio waves and the frequency of the echo poor information such as accurate measurement of target velocity Coverage of up to 150 meters, the use of the CW modulation mode, the speed and direction of moving target can be detected, has the high speed precision BX - CSR - speed radar sensor using micro trip array antenna design, speed and accurate, and can differentiate to and where vehicles installed on the road side, and can automatically measure multiple lane vehicle speeds

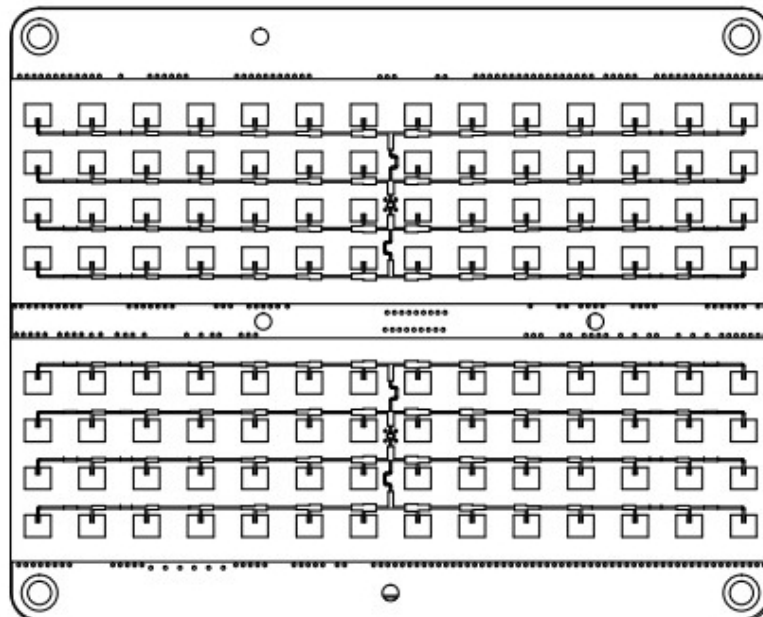
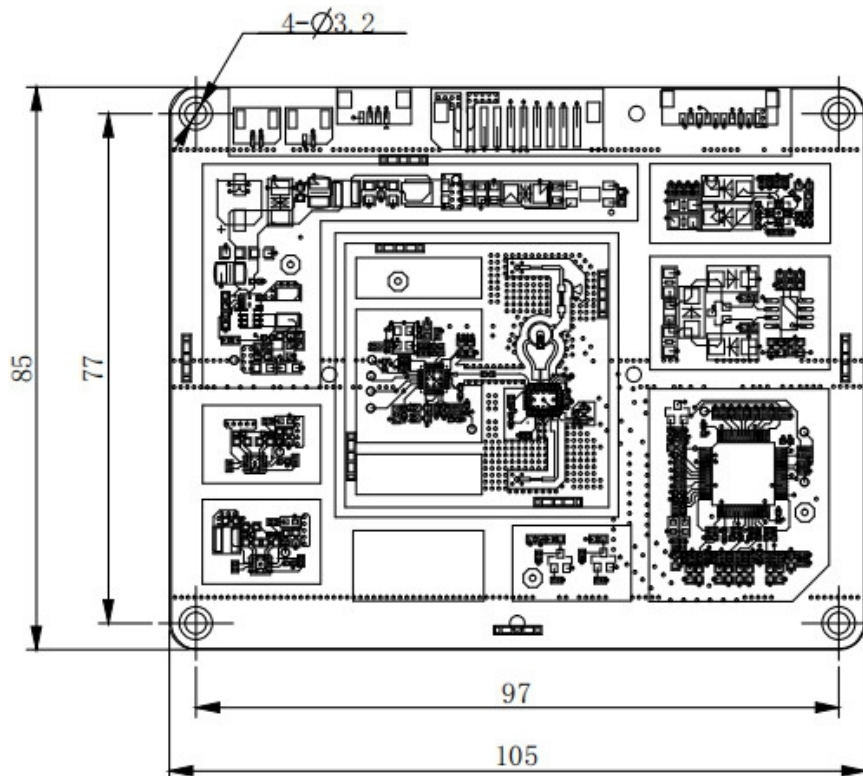
Products of Functions profile

- ◆ Small volume, convenient installation, convenient for field implementation;
- ◆ Products, low power consumption, less electricity, voltage dc 12 v power supply;
- ◆ The speed measurement distance is long and the coverage range is up to 150 meters,
- ◆ High capture rate, accurate speed measurement and stable performance;
- ◆ It can be widely used in road traffic speed measurement system and other fields.

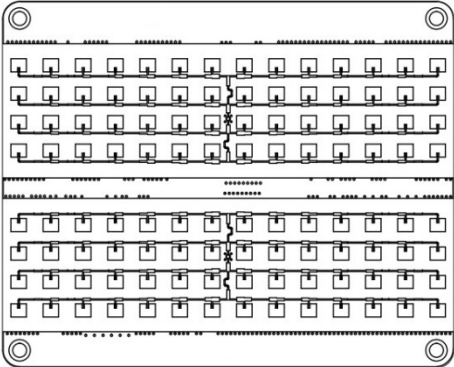
Installation of Diagram

Boundary dimension

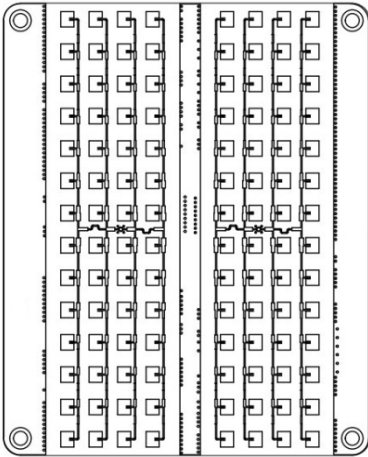
Units: mm



Installation procedure



Crosswise installed



Vertical installed

Note: Standard installation is recommended for horizontal installation, horizontal Angle of 6.7° ; Horizontal Angle of vertical mounting is 28°

Connection definition

When wiring, the serial number on the terminal of the machine shall correspond to the serial number on the label of the product.

Line color	Specific	Remark
red line	DC12V	VDD “+”
black line	GND	GND “-”
Corrigan's line	D+	Receiving the positive end of the signal
Orange Line	D-	Negative end of received signal
Green Line	GND	Signal earth

Technical specifications

Parameter	Specification
power supply	Standard configuration DC12V
Power dissipation	1.6W
Rotary speed range	5-300 km/h
Rate accuracy	-1-0 km/h
Communication interface	Standard configuration RS485
Work environment	temperature: -40 ~ 85°C
	Humidity: 5 ~ 95%RH

- ◆ It's recommended to purchase the special speed radar sensor provided by Onbon Technology. Do not recommend customers to choose and buy from other company.

Appendix

Short list of common sensor technical parameters

Products of name	Response time (seconds)	Measuring range	precision	*Environment temperature	*Ambient humidity
Temperature and humidity sensor	1	Temperature: -55°C~+125°C	Temperature: ±0.5°C	-10°C~+85°C	—
Temperature and humidity sensor	1	Temperature: -40°C~+80°C	Temperature: ±0.5°C	-40°C~+80°C	—
		Humidity: 0~99.9%RH	Humidity: ±3%RH		
Luminance transducer	5	Luminance: 1~65535 lux	Luminance: ±20%	-40°C~+85°C	0%RH~80%RH
Air velocity transducer BX-FS(485)	1	Wind speed: 0~60m/s	Wind speed: ±0.3m/s	-40°C~+60°C	0%RH~80%RH
Wind transducer BX-FX(485)	1	Wind direction: 0-359.9°	Wind direction: ±1°	-40°C~+60°C	0%RH~80%RH
Noise transducer BX-ZS(485)	1	Noise: 30dB~120dB	Noise: ±0.5dB	-20°C~+60°C	0%RH~80%RH
Air Quality Sensors BX-PM(485)Outdoor waterproof type	1	PM2.5: 0~6000ug/³	PM2.5、PM10: ±10%	-20°C~+60°C	0%RH~80%RH
		PM10: 0~6000ug/m³			
BX-QX(485) outdoor waterproof type	1	Temperature: -40°C~+120°C	Temperature: ±0.5°C	-20°C~+60°C	0%RH~80%RH
		Humidity: 0%RH~99%RH	Humidity: ±3%RH		
	1	Noise: 30dB~120dB	Noise: ±3db		
	1	PM2.5、PM10: 0-6000ug/m³	PM2.5、PM10: ±1ug/m³		

*The is direct of guarantee for sensor corresponding measure accuracy of working environment by range of ambient temperature and humidity listed in the table.

*In general with in market same type sensor can not directly compatible by all the sensors listed in the table are customized products of BX.

Technical Parameters of Common Sensors (Continued)

Products of name	Interface type	Transmission distance	Power supply
Temperature sensor	Monobus	10-12 meter	3.0V~5.5V
Temperature and humidity sensor	Monobus	10-12 meter	3.0V~5.5V
Luminance transducer	I ² C	10-12 meter	3.0V~5.5V
Wind Speed Sensor BX-FS(485)	RS485	Unlimited	12V or 24V power supply, power ≤0.5W
Wind direction sensor BX-FX(485)	RS485	Unlimited	12V or 24V power supply, power ≤0.5W
Noise Sensor BX-ZS(485)	RS485	Unlimited	12V or 24V power supply, power ≤0.5W
Air quality sensor BX-PM(485) outdoor waterproof type	RS485	Unlimited	12V or 24V power supply, power ≤0.5W
BX-QX(485) outdoor waterproof type - temperature and humidity	RS485	Unlimited	12V or 24V power supply, power ≤0.5W
BX-QX(485) Outdoor Waterproof - Noise	RS485	Unlimited	12V or 24V power supply, power ≤0.5W
BX-QX(485) Outdoor waterproof type - Air quality	RS485	Unlimited	12V or 24V power supply, power ≤0.5W


Shanghai Onbon technology INC

Ad: 7th Floor, Building 88, No. 1199, Qinzhou North Road, Xuhui District, Shanghai

Website: www.onbonbx.com

Tel:15921814956

Email: onbon@onbonbx.com

Facebook:  <https://www.facebook.com/profile.php?id=10001228033012>

Kunshang Onbon photoelectric manufacturer Base

Ad: 299 Fuchunjiang Road, Kunshan Development Zone, Jiangsu Province, China

